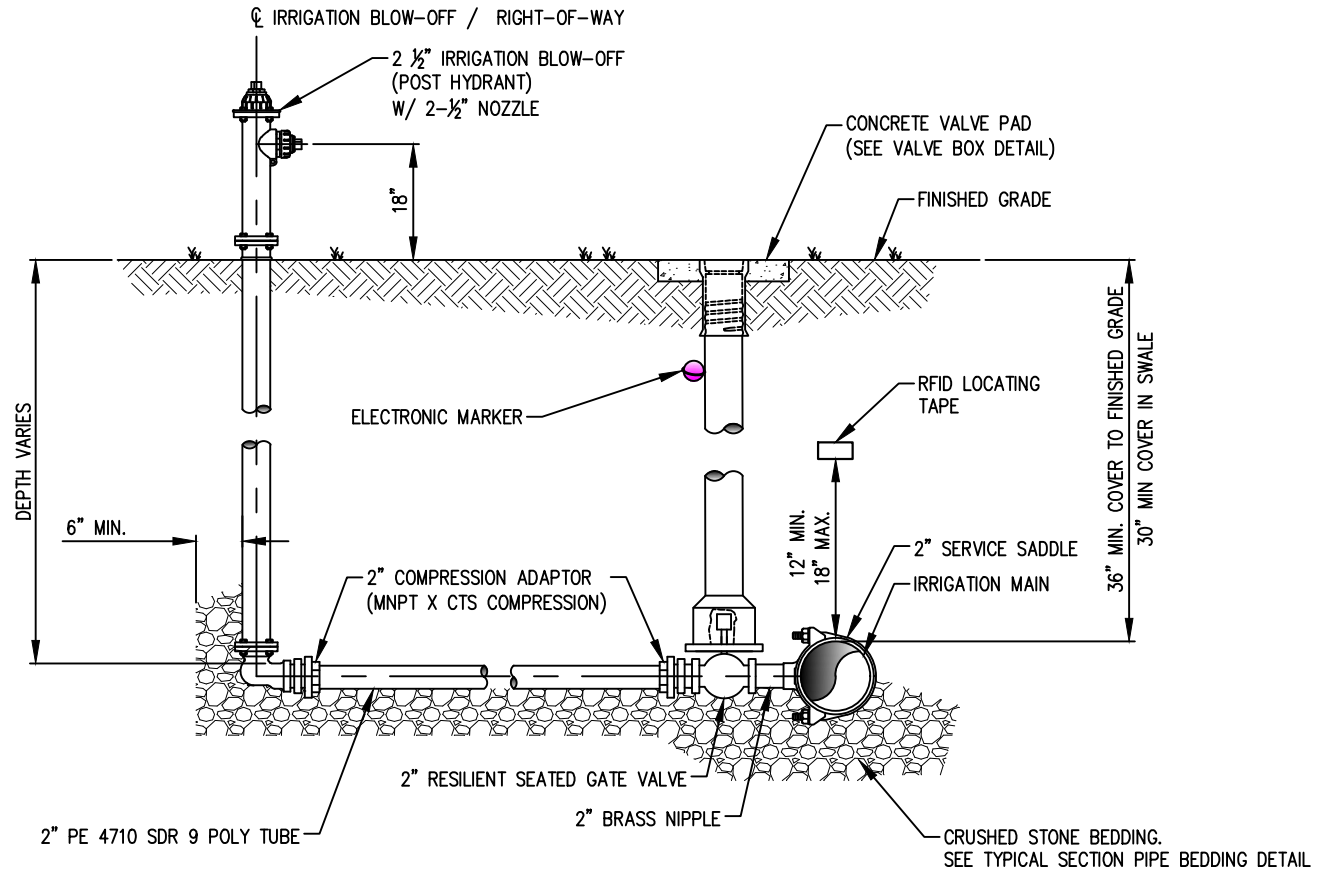


SAFETY PAINT		
COLOR	PAINT COLOR NAME - NUMBER	APPLICATION
LAVENDER	PURPLE RAIN - RGB 137, 52, 103	IRRIGATION WATER HYDRANT BODY
WHITE	WHITE - RGB 248, 253, 254	IRRIGATION WATER HYDRANT BONNET



NOTES:

1. SET BLOW-OFF ASSEMBLY IN UTILITY EASEMENT ON THE RIGHT-OF-WAY LINE. BLOW-OFF LOCATION TO BE APPROVED BY THE CITY OF CAPE CORAL.
2. DO NOT PLACE BLOW-OFF VALVE AND VALVE BOX IN SWALE.
3. PIPE TO HAVE A MINIMUM 30" COVER IN SWALE.
4. RESTRAIN ALL CONNECTIONS.
5. PAINT SHALL BE APPLIED IN FACTORY BY MANUFACTURER
IRRIGATION/REUSE - LAVENDER BODY & WHITE BONNET.
6. MINIMUM CLEARANCE BETWEEN AN OBSTRUCTIONS AND BLOW-OFFS SHALL BE 5 FEET.
7. CAUTION SHOULD BE TAKEN NOT TO ALLOW ANY MATERIAL TO FALL INTO THE VALVE BOX CYLINDER. CONTRACTOR WILL BE RESPONSIBLE FOR REMOVING ANY AND ALL MATERIAL RESULTING FROM THEIR VALVE BOX INSTALLATION AND/OR ADJUSTMENT OPERATION.
8. FOR PRODUCTS AND MATERIALS SEE THE PROJECT SPECIFICATIONS AND THE CITY OF CAPE CORAL QUALIFIED PRODUCTS LIST.
9. INSTALL RFID LOCATING TAPE PER MANUFACTURER'S INSTRUCTIONS.

I-202

2 1/2" IRRIGATION BLOW-OFF

NOT TO SCALE

REVISION DATE
07-14-2022
ADOPTION DATE
08-17-2022



CITY OF CAPE CORAL
UTILITIES DEPARTMENT
P.O. BOX 150027
CAPE CORAL, FLORIDA 33915-0027

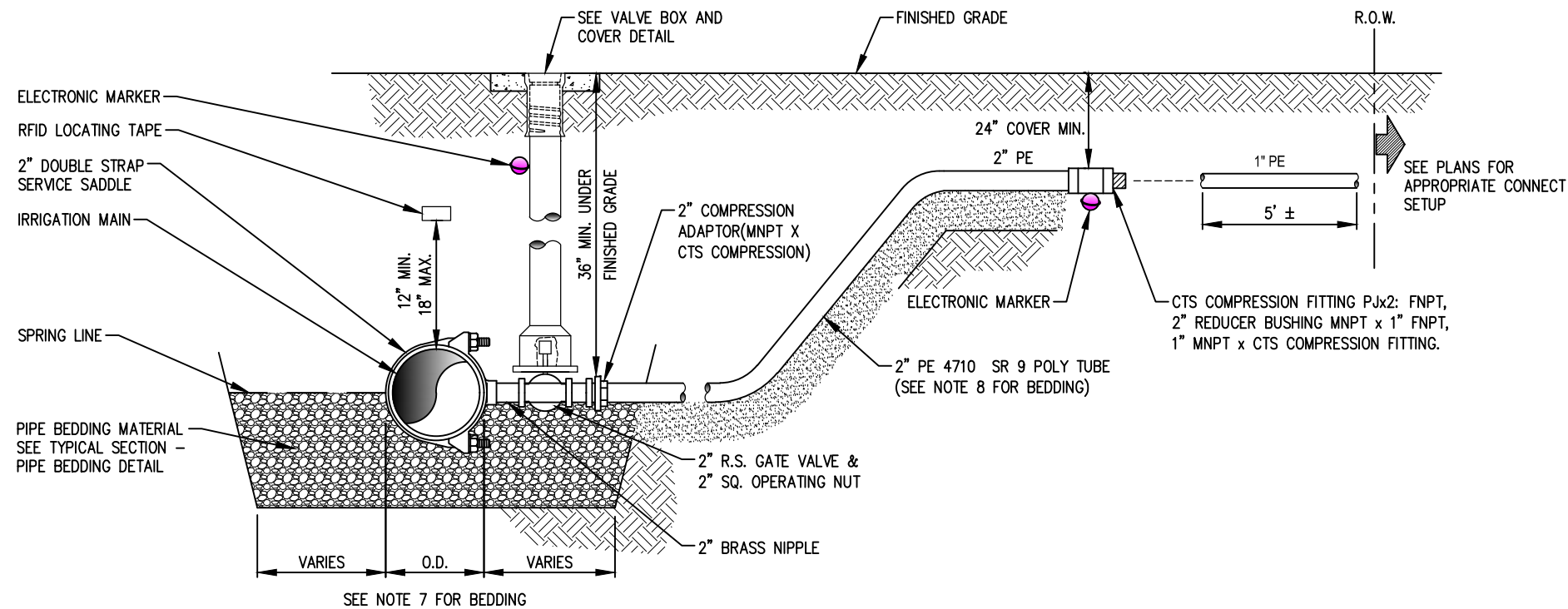
DETAIL NAME

2 1/2" IRRIGATION BLOW-OFF

DETAIL NO.

I-202

I-242

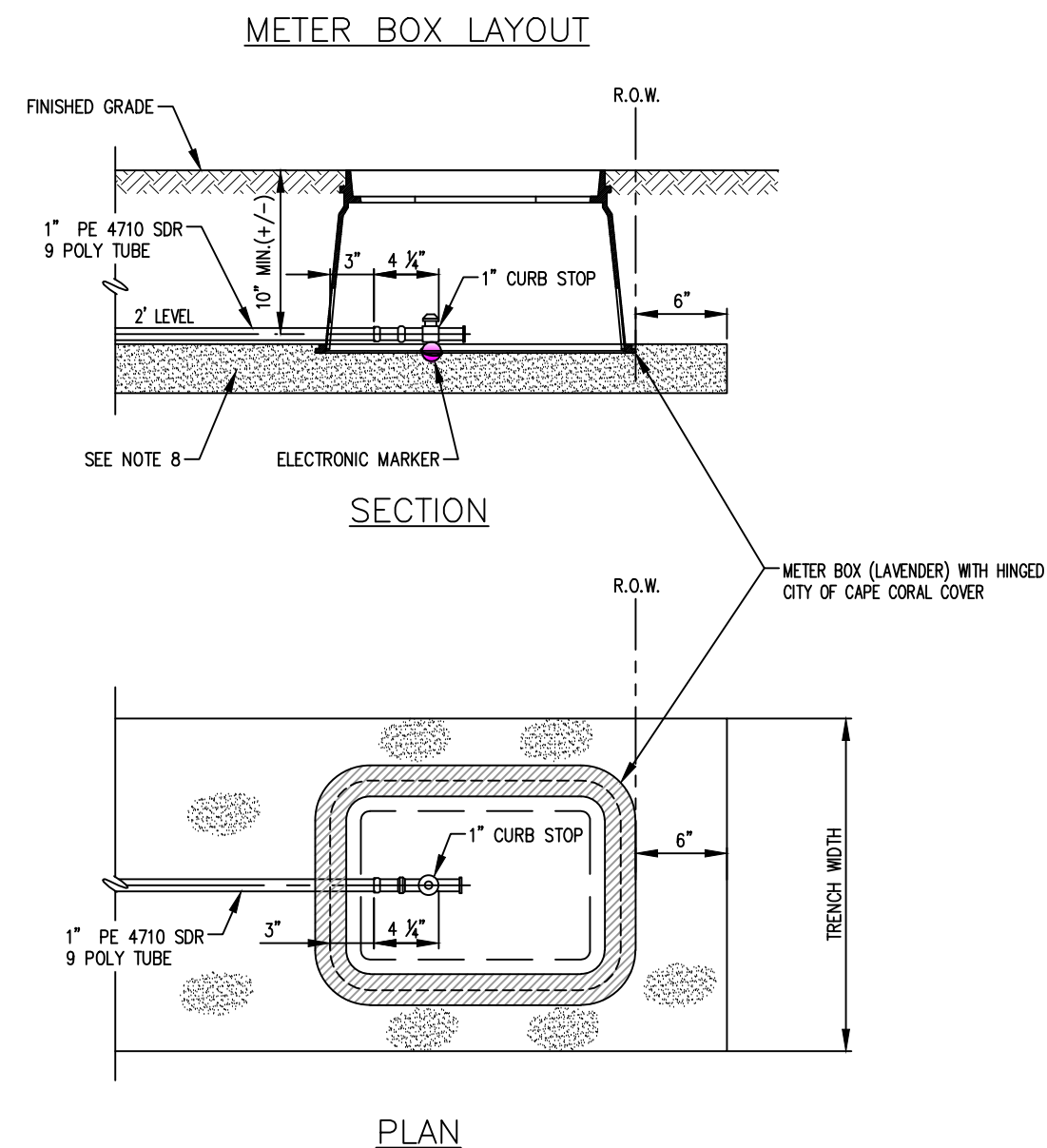
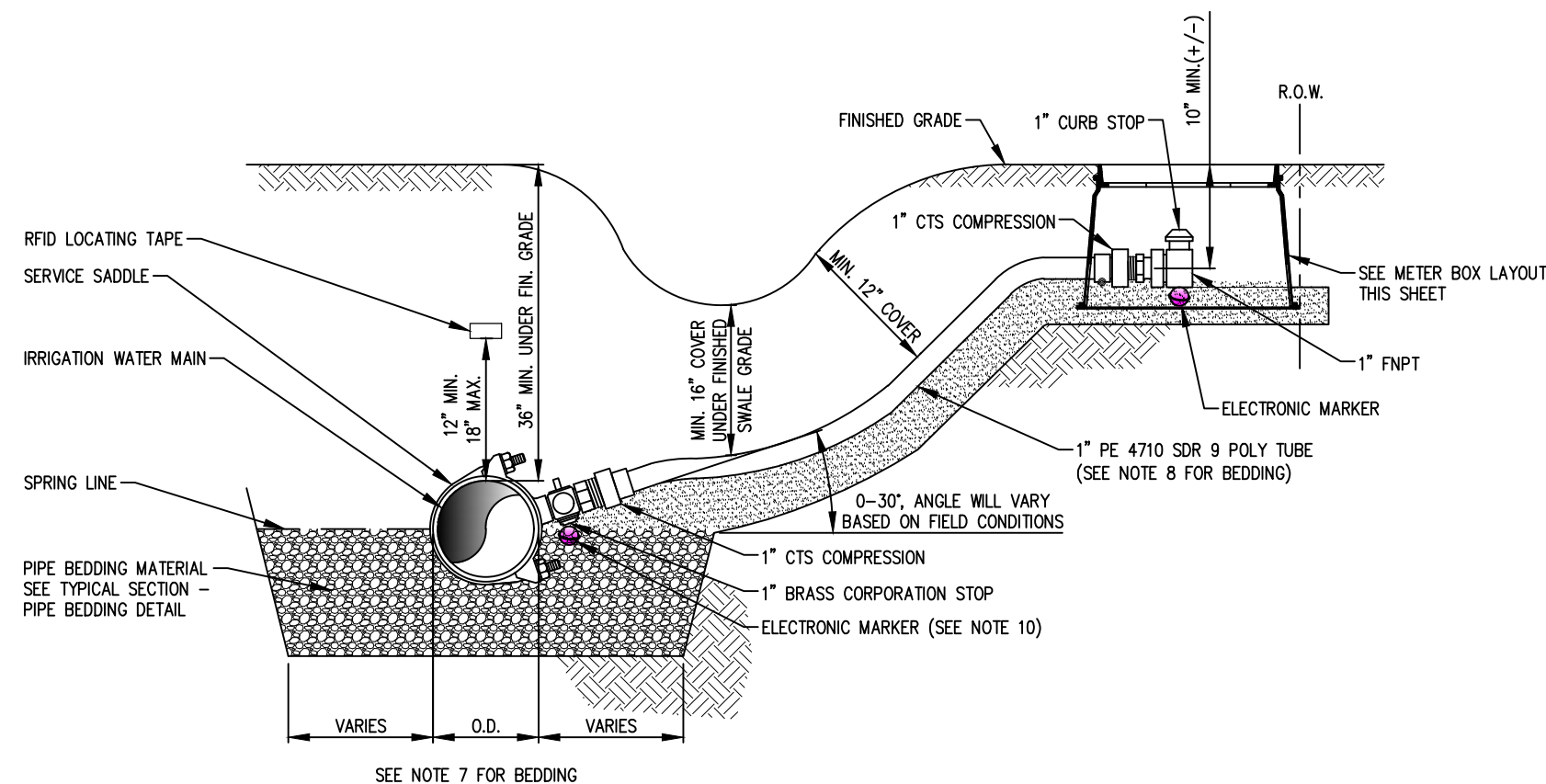


NOTES:

1. SINGLE SERVICES FOR BOTH SHORT AND LONG SIDE SERVICES SHALL BE 1" LAVENDER PE 4710 ONLY.
2. FOR INSTALLATIONS WHERE THE SERVICE CONNECTION CROSSES DIVIDED STREETS A MINIMUM 2" SCH 40 PVC CASING SLEEVE WILL BE REQUIRED AND MUST EXTEND CONTINUOUS THROUGH THE MEDIAN AND TERMINATE AT LEAST 1 FOOT PAST THE EDGE OF THE PAVED SURFACE. CASING SLEEVE UNDER THE STREET MAY BE BORED/BULLETED INTO POSITION. A MINIMUM OF 24" (2') COVER TO BE MAINTAINED BETWEEN CASING SLEEVE AND PAVED SURFACE.
3. ALL CORPORATION AND CURB STOPS SHALL BE COMPRESSION TYPE FITTINGS.
4. A MINIMUM 18" HORIZONTAL SEPARATION BETWEEN CORPORATION STOPS, SERVICE SADDLES, VALVES, AND/OR FITTINGS SHALL BE MAINTAINED REGARDLESS OF WHICH SIDE OF THE CARRIER PIPE THEY ARE LOCATED ON. ELECTRONIC MARKERS TO BE INSTALLED AT ALL CORPORATION STOPS.
5. MAINTAIN REQUIRED SEPARATION BETWEEN IRRIGATION AND POTABLE WATER SERVICE PIPING. SEE DETAILS UG-107 AND UG-109.
6. ALL CURB STOPS SHALL HAVE COLOR CODED TAGS FOR POSITIVE IDENTIFICATION.
7. SEE TYPICAL SECTION - PIPE BEDDING DETAIL. FULLY SUPPORT SERVICE CONNECTION CORPORATION STOP FITTINGS AND POLY TUBE WITH BEDDING MATERIAL WITHIN THE MAINLINE TRENCH WIDTH.
8. REFER TO TYPICAL SECTION SDR 9 POLYETHYLENE SERVICE BEDDING DETAIL FOR BEDDING REQUIREMENTS.
9. FOR PRODUCTS AND MATERIALS SEE THE PROJECT SPECIFICATIONS AND THE CITY OF CAPE CORAL QUALIFIED PRODUCTS LIST.
10. FOR SERVICE TAPS LOCATED UNDER PAVEMENT, THE CONTRACTOR SHALL INSTALL AN ELECTRONIC MARKER AT THE GATE VALVE.
11. METER BOXES SHALL NOT BE PROVIDED FOR UNDEVELOPED PROPERTIES UNLESS OTHERWISE INDICATED.
12. INSTALL RFID LOCATING TAPE PER MANUFACTURER'S INSTRUCTIONS.

I-250 2" TO 1" LONG RUN IRRIGATION RESIDENTIAL SERVICE CONNECTION
NOT TO SCALE

REVISION DATE	 CITY OF CAPE CORAL UTILITIES DEPARTMENT P.O. BOX 150027 CAPE CORAL, FLORIDA 33915-0027	DETAIL NAME	DETAIL NO.
07-14-2022		2" TO 1" LONG RUN IRRIGATION RESIDENTIAL SERVICE CONNECTION	I-250
ADOPTION DATE			
08-17-2022			



NOTES:

1. SINGLE SERVICES FOR BOTH SHORT AND LONG SIDE SERVICES SHALL BE 1" LAVENDER PE 4710 ONLY.
2. FOR INSTALLATIONS WHERE THE SERVICE CONNECTION CROSSES DIVIDED STREETS A MINIMUM 2" SCH 40 PVC CASING SLEEVE WILL BE REQUIRED AND MUST EXTEND CONTINUOUS THROUGH THE MEDIAN AND TERMINATE AT LEAST 1 FOOT PAST THE EDGE OF THE PAVED SURFACE. CASING SLEEVE UNDER THE STREET MAY BE BORED/BULLETED INTO POSITION. A MINIMUM OF 24" (2') COVER TO BE MAINTAINED BETWEEN CASING SLEEVE AND PAVED SURFACE.
3. ALL CORPORATION AND CURB STOPS SHALL BE COMPRESSION TYPE FITTINGS.
4. A MINIMUM 18" HORIZONTAL SEPARATION BETWEEN CORPORATION STOPS, SERVICE SADDLES, VALVES, AND/OR FITTINGS SHALL BE MAINTAINED REGARDLESS OF WHICH SIDE OF THE CARRIER PIPE THEY ARE LOCATED ON. ELECTRONIC MARKERS TO BE INSTALLED AT ALL CORPORATION STOPS.
5. MAINTAIN REQUIRED SEPARATION BETWEEN IRRIGATION AND POTABLE WATER SERVICE PIPING. SEE DETAILS UG-107 AND UG-109.
6. ALL CURB STOPS SHALL HAVE COLOR CODED TAGS FOR POSITIVE IDENTIFICATION.
7. SEE TYPICAL SECTION - PIPE BEDDING DETAIL. FULLY SUPPORT SERVICE CONNECTION CORPORATION STOP FITTINGS AND POLY TUBE WITH BEDDING MATERIAL WITHIN THE MAINLINE TRENCH WIDTH. THE METER BOX SHALL HAVE SEDIMENT REMOVED. CURB STOPS WITHIN THE METER BOX SHALL BE ACCESSIBLE AND ON TOP OF THE BEDDING.
8. REFER TO TYPICAL SECTION SDR 9 POLYETHYLENE SERVICE BEDDING DETAIL FOR BEDDING REQUIREMENTS.
9. FOR PRODUCTS AND MATERIALS SEE THE PROJECT SPECIFICATIONS AND THE CITY OF CAPE CORAL QUALIFIED PRODUCTS LIST.
10. FOR SERVICE TAPS LOCATED UNDER PAVEMENT, THE CONTRACTOR SHALL INSTALL AN ELECTRONIC MARKER AT THE CORP STOP.
11. METER BOXES SHALL NOT BE PROVIDED FOR UNDEVELOPED PROPERTIES UNLESS OTHERWISE INDICATED.
12. INSTALL RFID LOCATION TAPE PER MANUFACTURER'S INSTRUCTIONS.

I-251

1" IRRIGATION WATER (SHORT SIDE & LONG SIDE) RESIDENTIAL SINGLE SERVICE CONNECTION - IMPROVED PROPERTY
NOT TO SCALE

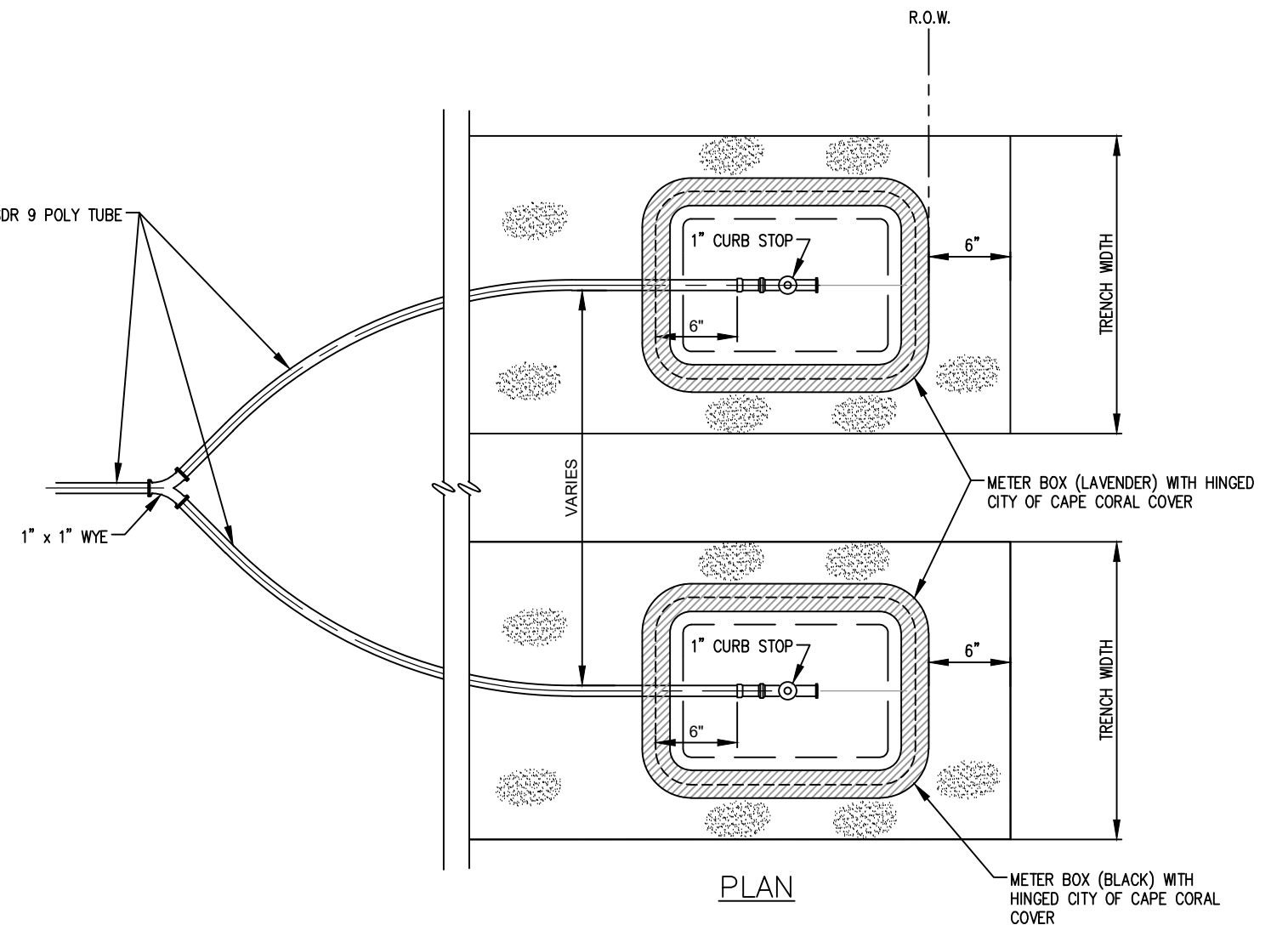
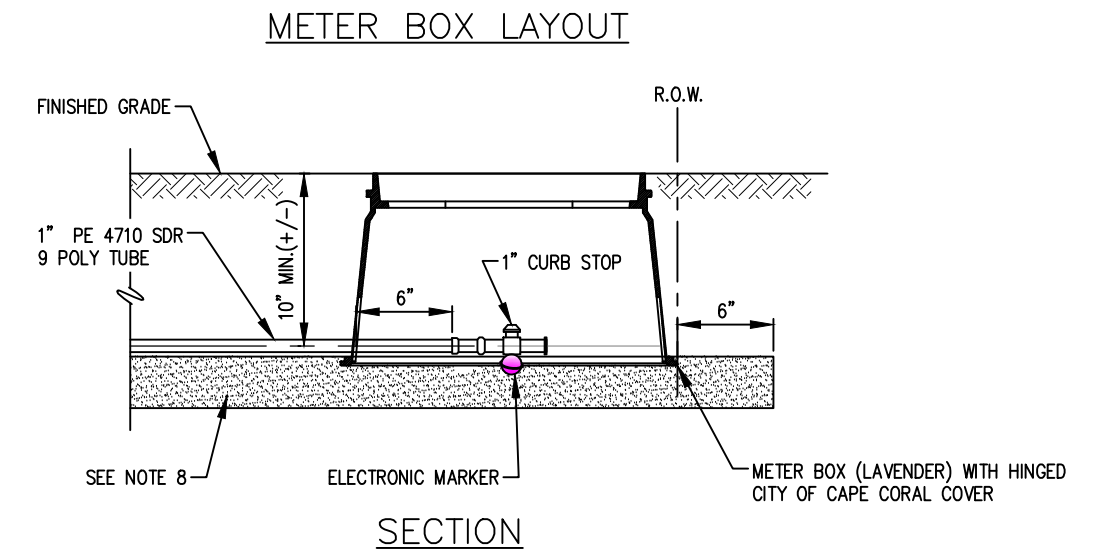
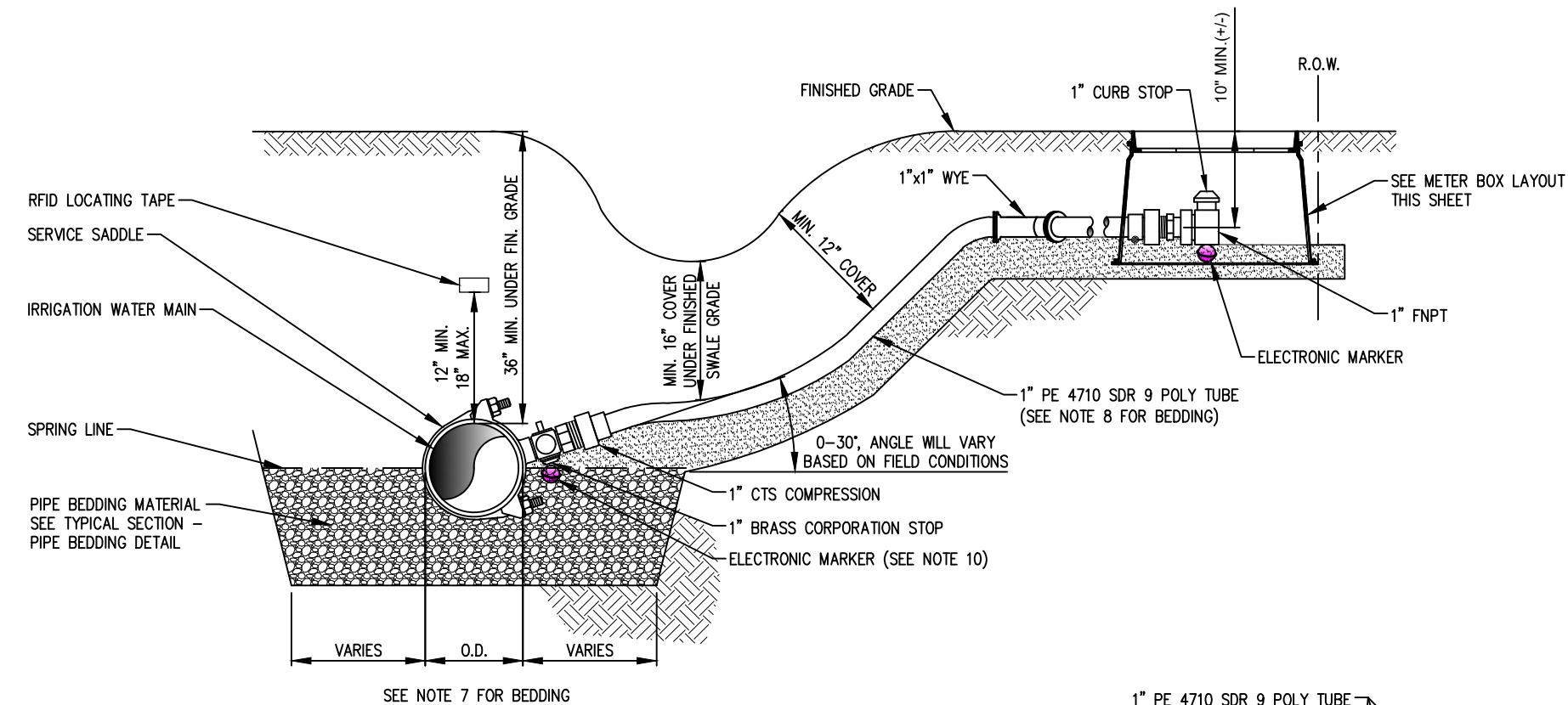
REVISION DATE
07-14-2022
ADOPTION DATE
08-17-2022



CITY OF CAPE CORAL
UTILITIES DEPARTMENT
P.O. BOX 150027
CAPE CORAL, FLORIDA 33915-0027

DETAIL NAME
1" IRRIGATION WATER (SHORT SIDE & LONG SIDE) RESIDENTIAL SINGLE SERVICE CONNECTION IMPROVED PROPERTY

DETAIL NO.
I-251



NOTES:

1. SINGLE SERVICES FOR BOTH SHORT AND LONG SIDE SERVICES SHALL BE 1" LAVENDER PE 4710 ONLY.
2. FOR INSTALLATIONS WHERE THE SERVICE CONNECTION CROSSES DIVIDED STREETS A MINIMUM 2" SCH 40 PVC CASING SLEEVE WILL BE REQUIRED AND MUST EXTEND CONTINUOUS THROUGH THE MEDIAN AND TERMINATE AT LEAST 1 FOOT PAST THE EDGE OF THE PAVED SURFACE. CASING SLEEVE UNDER THE STREET MAY BE BORED/BULLETED INTO POSITION. A MINIMUM OF 24" (2') COVER TO BE MAINTAINED BETWEEN CASING SLEEVE AND PAVED SURFACE.
3. ALL CORPORATION AND CURB STOPS SHALL BE COMPRESSION TYPE FITTINGS.
4. A MINIMUM 18" HORIZONTAL SEPARATION BETWEEN CORPORATION STOPS, SERVICE SADDLES, VALVES, AND/OR FITTINGS SHALL BE MAINTAINED REGARDLESS OF WHICH SIDE OF THE CARRIER PIPE THEY ARE LOCATED ON. ELECTRONIC MARKERS TO BE INSTALLED AT ALL CORPORATION STOPS.
5. MAINTAIN REQUIRED SEPARATION BETWEEN IRRIGATION AND POTABLE WATER SERVICE PIPING. SEE DETAILS UG-107 AND UG-109.
6. ALL CURB STOPS SHALL HAVE COLOR CODED TAGS FOR POSITIVE IDENTIFICATION.
7. SEE TYPICAL SECTION - PIPE BEDDING DETAIL. FULLY SUPPORT SERVICE CONNECTION CORPORATION STOP FITTINGS AND POLY TUBE WITH BEDDING MATERIAL WITHIN THE MAINLINE TRENCH WIDTH. THE METER BOX SHALL HAVE SEDIMENT REMOVED. CURB STOPS WITHIN THE METER BOX SHALL BE ACCESSIBLE AND ON TOP OF THE BEDDING.
8. REFER TO TYPICAL SECTION SDR 9 POLYETHYLENE SERVICE BEDDING DETAIL FOR BEDDING REQUIREMENTS.
9. FOR PRODUCTS AND MATERIALS SEE THE PROJECT SPECIFICATIONS AND THE CITY OF CAPE CORAL QUALIFIED PRODUCTS LIST.
10. FOR SERVICE TAPS LOCATED UNDER PAVEMENT, THE CONTRACTOR SHALL INSTALL AN ELECTRONIC MARKER AT THE CORP STOP.
11. METER BOXES SHALL NOT BE PROVIDED FOR UNDEVELOPED PROPERTIES UNLESS OTHERWISE INDICATED.
12. INSTALL RFID LOCATION TAPE PER MANUFACTURER'S INSTRUCTIONS.

I-253

1" IRRIGATION WATER (SHORT & LONG SIDE) RESIDENTIAL DOUBLE (WHIP) SERVICE CONNECTION - IMPROVED PROPERTY

NOT TO SCALE

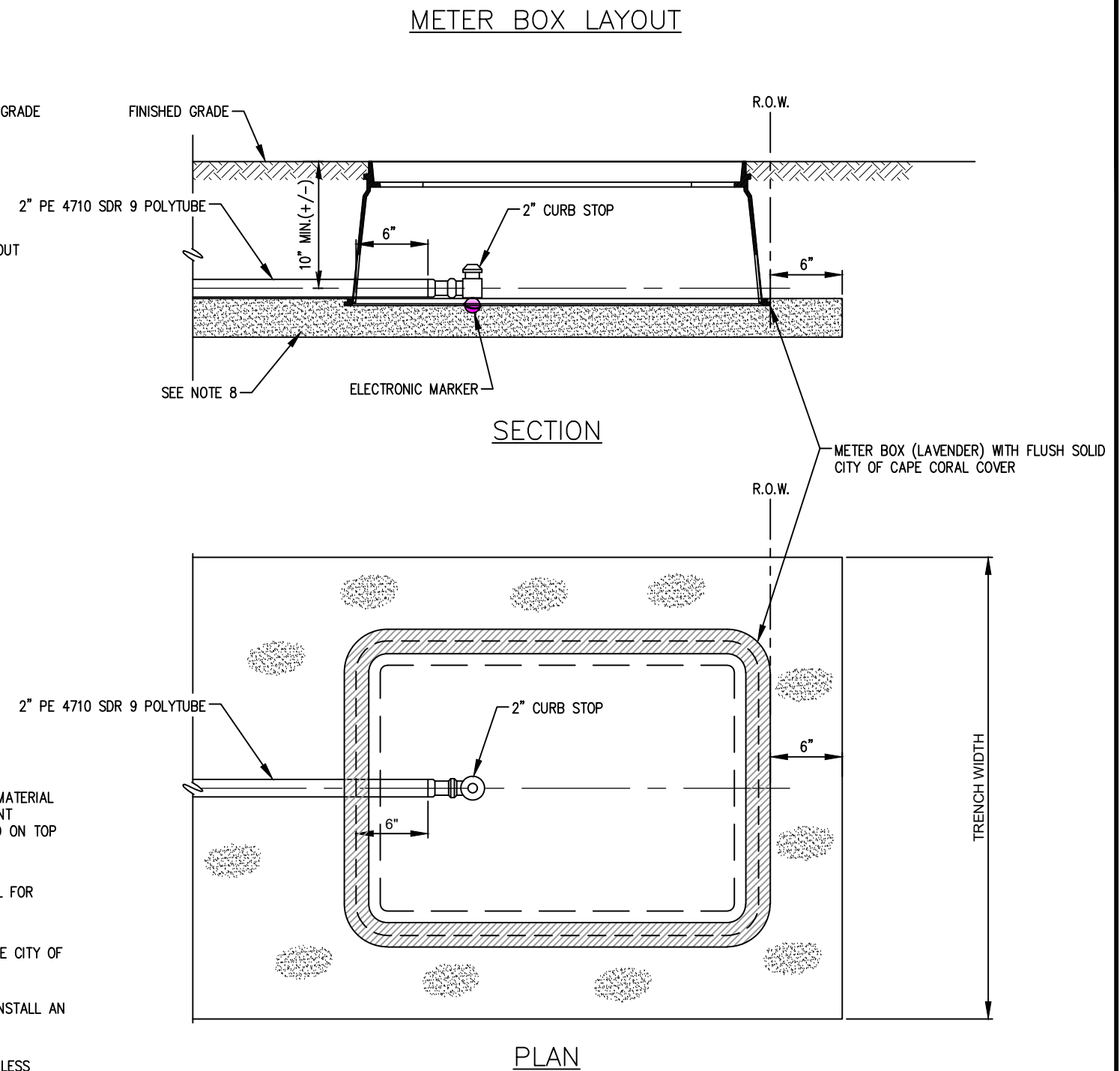
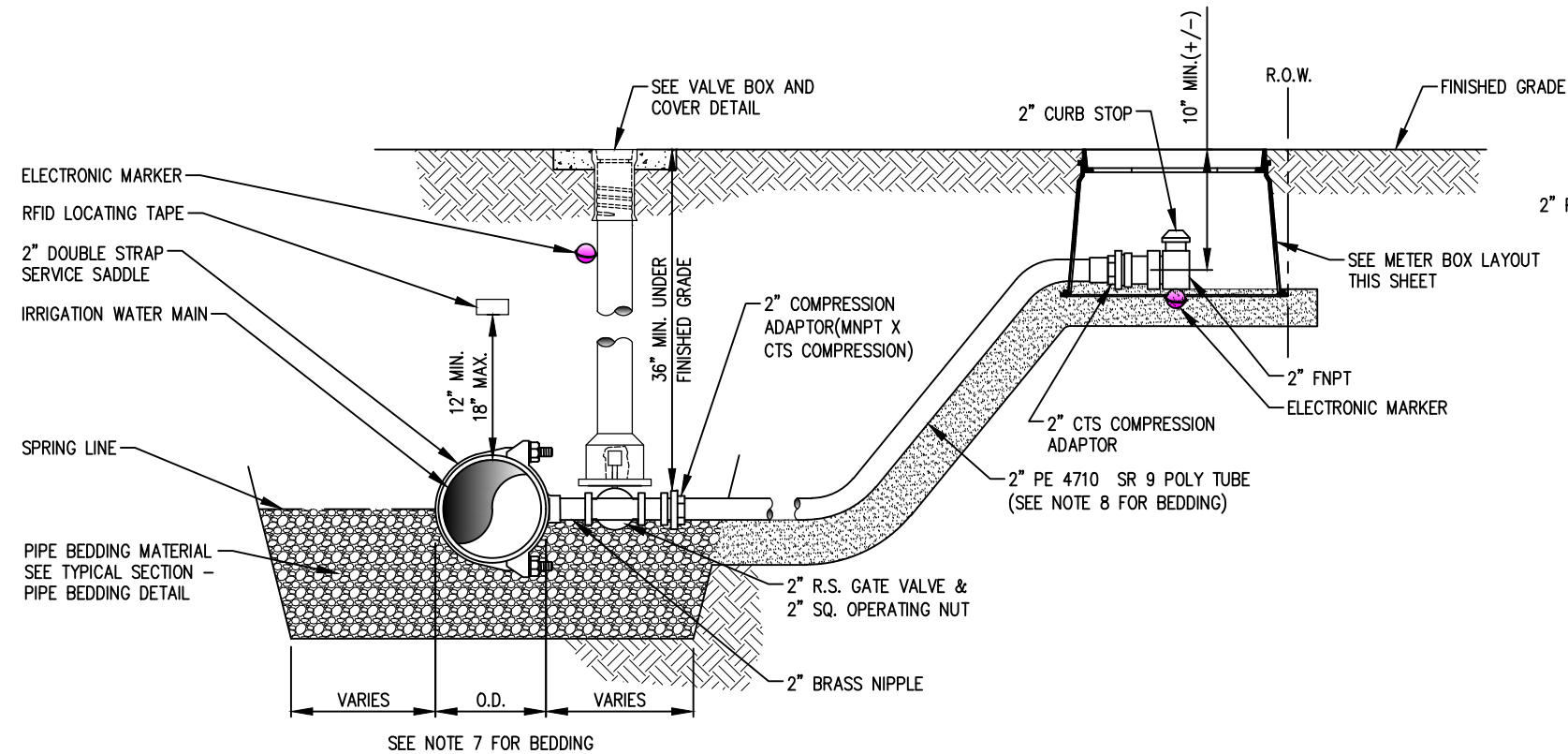
REVISION DATE
07-14-2022
ADOPTION DATE
08-17-2022



CITY OF CAPE CORAL
UTILITIES DEPARTMENT
P.O. BOX 150027
CAPE CORAL, FLORIDA 33915-0027

DETAIL NAME
1" IRRIGATION WATER (SHORT & LONG SIDE) RESIDENTIAL DOUBLE (WHIP) SERVICE CONNECTION - IMPROVED PROPERTY

DETAIL NO.
I-253



NOTES:

1. SINGLE SERVICES FOR BOTH SHORT AND LONG SIDE SERVICES SHALL BE 2" LAVENDER PE 4710 ONLY.
2. FOR INSTALLATIONS WHERE THE SERVICE CONNECTION CROSSES DIVIDED STREETS A MINIMUM 3" SCH 40 PVC CASING SLEEVE WILL BE REQUIRED AND MUST EXTEND CONTINUOUS THROUGH THE MEDIAN AND TERMINATE AT LEAST 1 FOOT PAST THE EDGE OF THE PAVED SURFACE. CASING SLEEVE UNDER THE STREET MAY BE BORED/BULLETED INTO POSITION. A MINIMUM OF 24" (2') COVER TO BE MAINTAINED BETWEEN CASING SLEEVE AND PAVED SURFACE.
3. ALL CORPORATION AND CURB STOPS SHALL BE COMPRESSION TYPE FITTINGS.
4. A MINIMUM 18" HORIZONTAL SEPARATION BETWEEN CORPORATION STOPS, SERVICE SADDLES, VALVES, AND/OR FITTINGS SHALL BE MAINTAINED REGARDLESS OF WHICH SIDE OF THE CARRIER PIPE THEY ARE LOCATED ON. ELECTRONIC MARKERS TO BE INSTALLED AT ALL CORPORATION STOPS
5. MAINTAIN REQUIRED SEPARATION BETWEEN IRRIGATION AND POTABLE WATER SERVICE PIPING. SEE DETAILS UG-107 AND UG-109.
6. ALL CURB STOPS SHALL HAVE COLOR CODED TAGS FOR POSITIVE IDENTIFICATION.
7. SEE TYPICAL SECTION - PIPE BEDDING DETAIL. FULLY SUPPORT SERVICE CONNECTION CORPORATION STOP FITTINGS AND POLY TUBE WITH BEDDING MATERIAL WITHIN THE MAINLINE TRENCH WIDTH. THE METER BOX SHALL HAVE SEDIMENT REMOVED. CURB STOPS WITHIN THE METER BOX SHALL BE ACCESSIBLE AND ON TOP OF THE BEDDING.
8. REFER TO TYPICAL SECTION SDR 9 POLYETHYLENE SERVICE BEDDING DETAIL FOR BEDDING REQUIREMENTS.
9. FOR PRODUCTS AND MATERIALS SEE THE PROJECT SPECIFICATIONS AND THE CITY OF CAPE CORAL QUALIFIED PRODUCTS LIST.
10. FOR SERVICE TAPS LOCATED UNDER PAVEMENT, THE CONTRACTOR SHALL INSTALL AN ELECTRONIC MARKER AT THE CORP STOP.
11. METER BOXES SHALL NOT BE PROVIDED FOR UNDEVELOPED PROPERTIES UNLESS OTHERWISE INDICATED.
12. INSTALL RFID LOCATION TAPE PER MANUFACTURER'S INSTRUCTIONS.

I-255

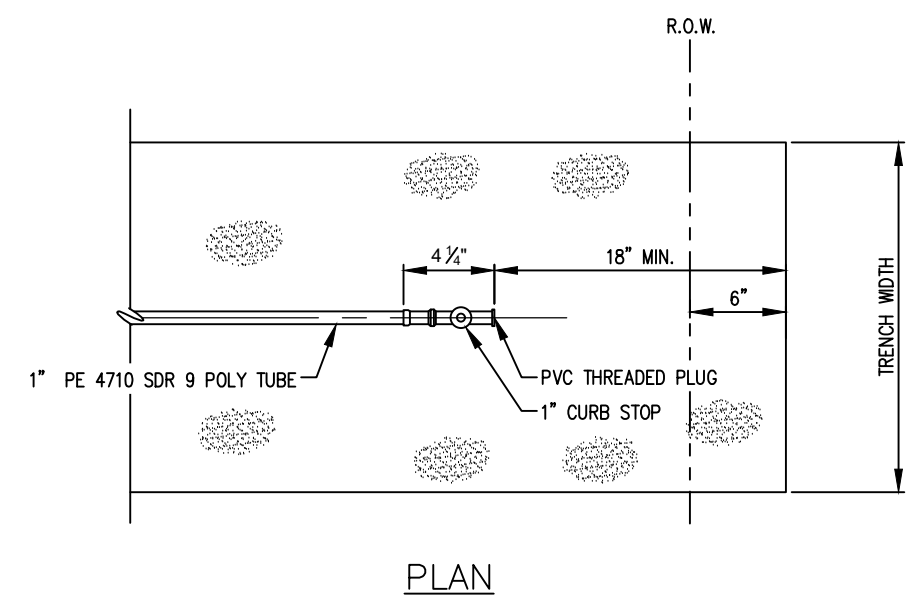
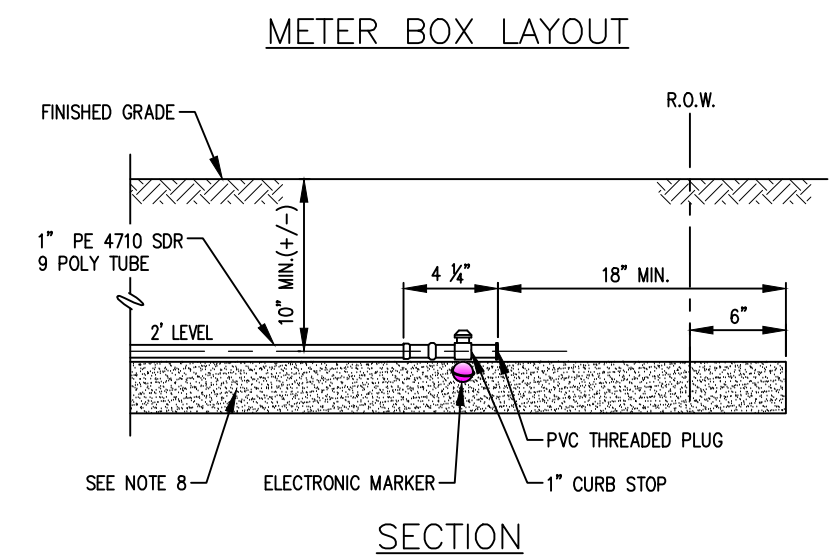
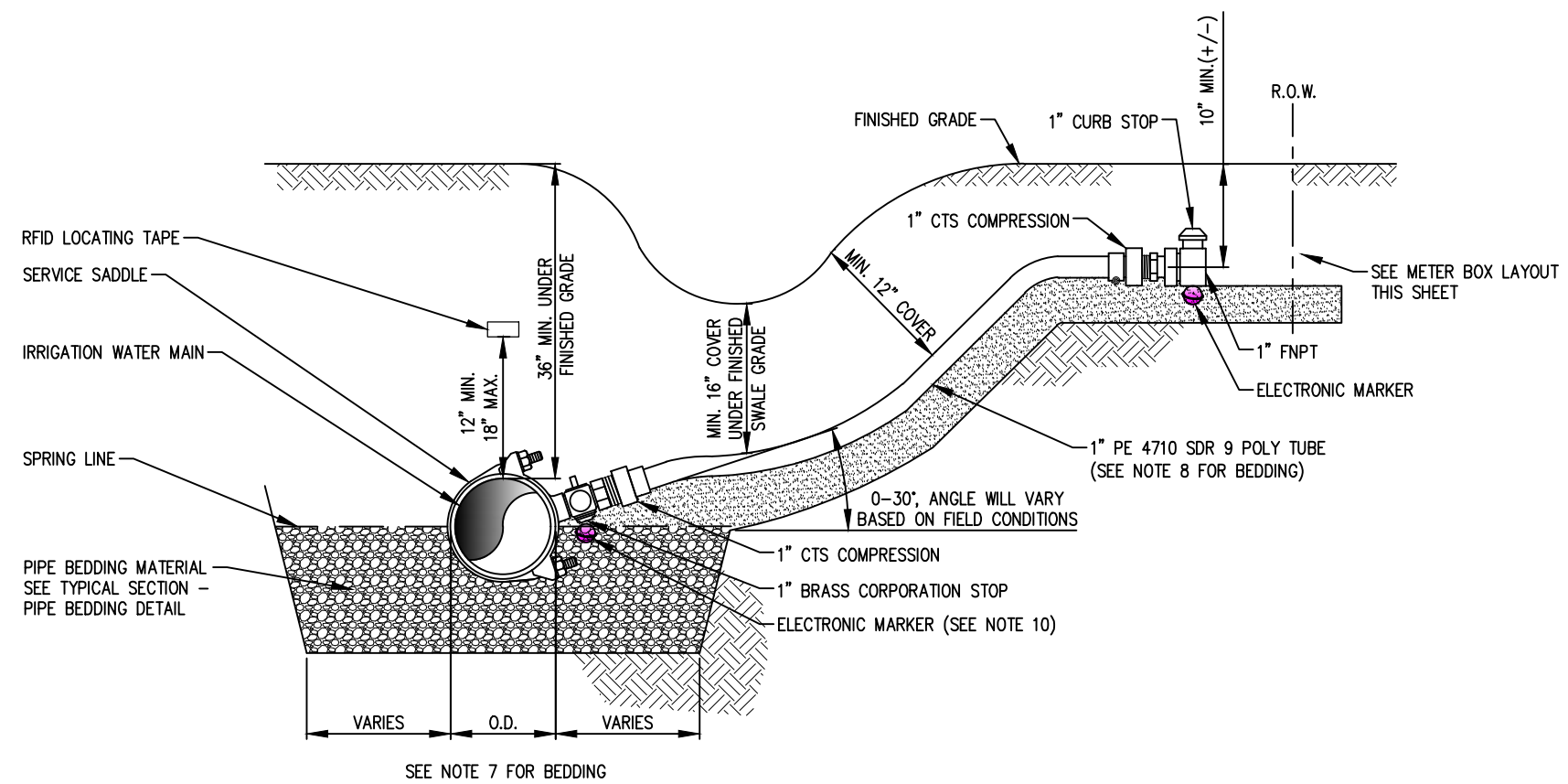
2" IRRIGATION WATER (SHORT & LONG SIDE) COMMERCIAL/MULTI-FAMILY SINGLE SERVICE CONNECTION - HDPE -OPTION - IMPROVED PROPERTY
NOT TO SCALE

REVISION DATE
07-14-2022
ADOPTION DATE
08-17-2022



CITY OF CAPE CORAL
UTILITIES DEPARTMENT
P.O. BOX 150027
CAPE CORAL, FLORIDA 33915-0027

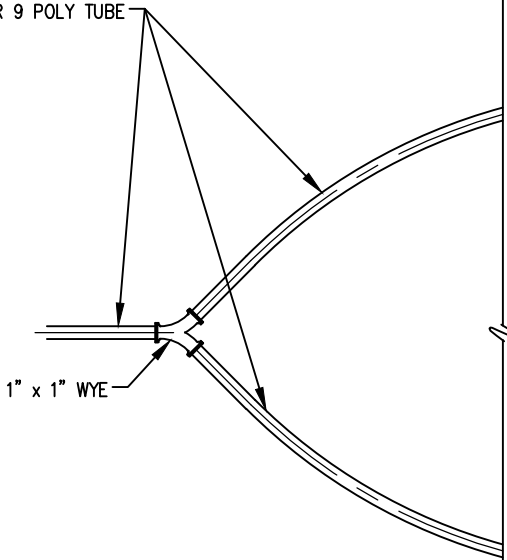
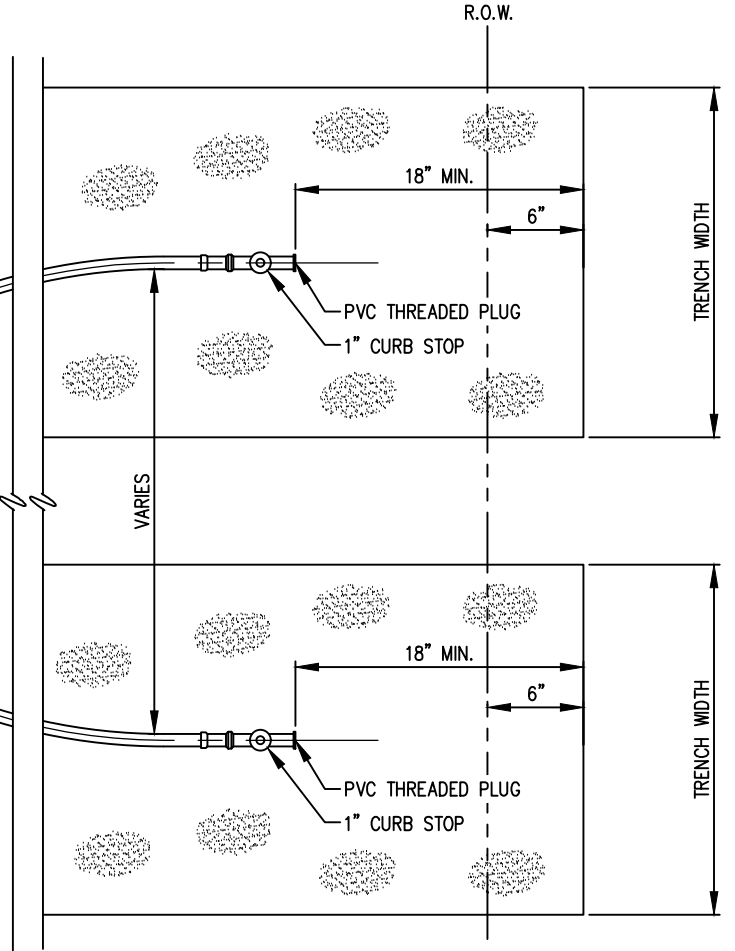
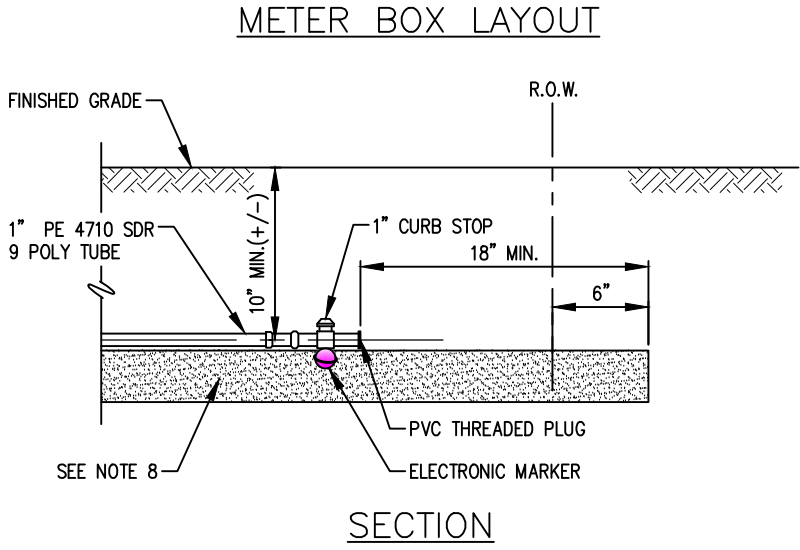
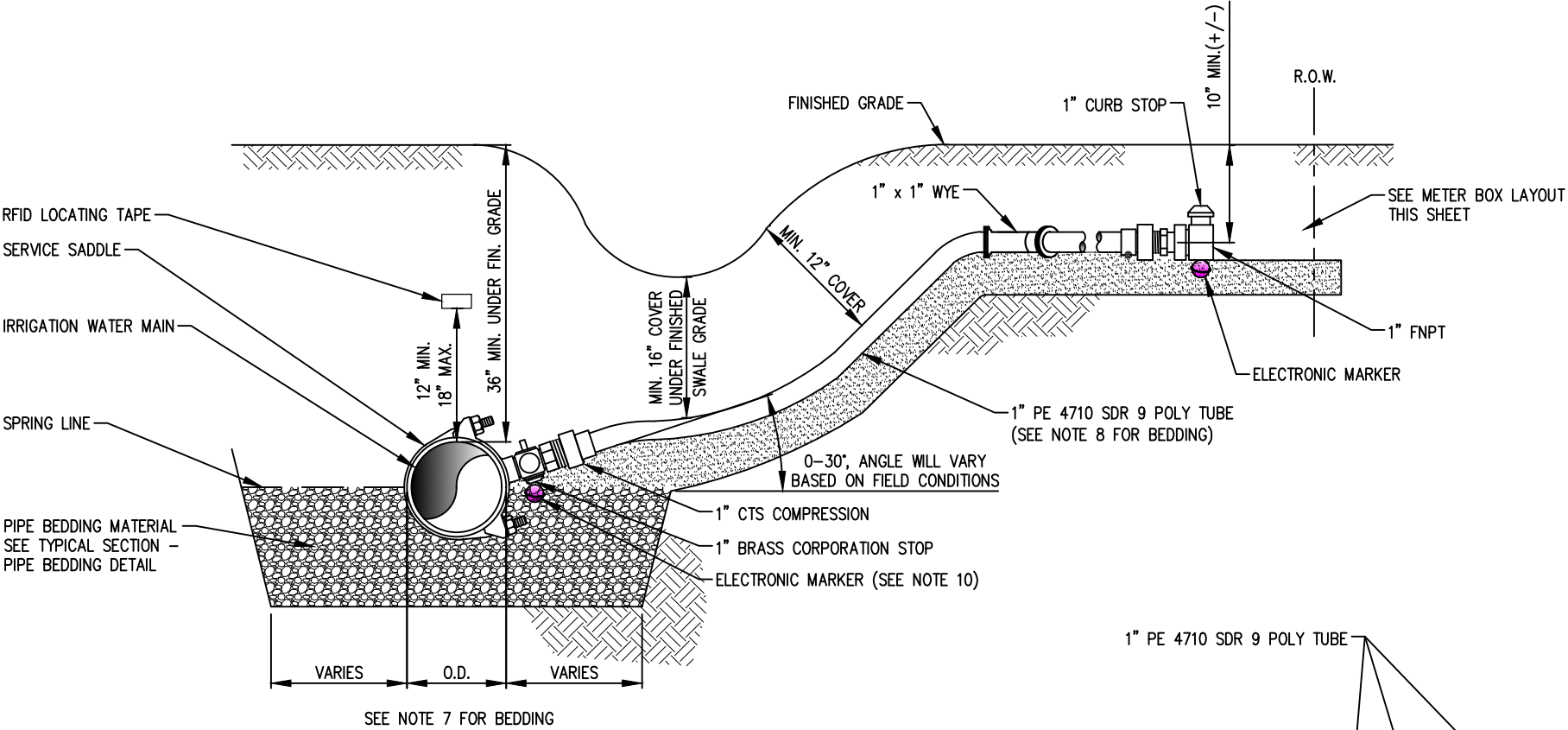
DETAIL NAME	DETAIL NO.
2" IRRIGATION WATER (SHORT & LONG SIDE) COMMERCIAL/MULTI-FAMILY SINGLE SERVICE CONNECTION - HDPE OPTION - IMPROVED PROPERTY	I-255



- NOTES:**
1. SINGLE SERVICES FOR BOTH SHORT AND LONG SIDE SERVICES SHALL BE 1" LAVENDER PE 4710 ONLY.
 2. FOR INSTALLATIONS WHERE THE SERVICE CONNECTION CROSSES DIVIDED STREETS A MINIMUM 2" SCH 40 PVC CASING SLEEVE WILL BE REQUIRED AND MUST EXTEND CONTINUOUS THROUGH THE MEDIAN AND TERMINATE AT LEAST 1 FOOT PAST THE EDGE OF THE PAVED SURFACE. CASING SLEEVE UNDER THE STREET MAY BE BORED/BULLETED INTO POSITION. A MINIMUM OF 24" (2') COVER TO BE MAINTAINED BETWEEN CASING SLEEVE AND PAVED SURFACE.
 3. ALL CORPORATION AND CURB STOPS SHALL BE COMPRESSION TYPE FITTINGS.
 4. A MINIMUM 18" HORIZONTAL SEPARATION BETWEEN CORPORATION STOPS, SERVICE SADDLES, VALVES, AND/OR FITTINGS SHALL BE MAINTAINED REGARDLESS OF WHICH SIDE OF THE CARRIER PIPE THEY ARE LOCATED ON. ELECTRONIC MARKERS TO BE INSTALLED AT ALL CORPORATION STOPS.
 5. MAINTAIN REQUIRED SEPARATION BETWEEN IRRIGATION AND POTABLE WATER SERVICE PIPING. SEE DETAILS UG-107 AND UG-109.
 6. ALL CURB STOPS SHALL HAVE COLOR CODED TAGS FOR POSITIVE IDENTIFICATION.
 7. SEE TYPICAL SECTION - PIPE BEDDING DETAIL. FULLY SUPPORT SERVICE CONNECTION CORPORATION STOP FITTINGS AND POLY TUBE WITH BEDDING MATERIAL WITHIN THE MAINLINE TRENCH WIDTH.
 8. REFER TO TYPICAL SECTION SDR 9 POLYETHYLENE SERVICE BEDDING DETAIL FOR BEDDING REQUIREMENTS.
 9. FOR PRODUCTS AND MATERIALS SEE THE PROJECT SPECIFICATIONS AND THE CITY OF CAPE CORAL QUALIFIED PRODUCTS LIST.
 10. FOR SERVICE TAPS LOCATED UNDER PAVEMENT, THE CONTRACTOR SHALL INSTALL AN ELECTRONIC MARKER AT THE CORP STOP.
 11. METER BOXES SHALL NOT BE PROVIDED FOR UNDEVELOPED PROPERTIES UNLESS OTHERWISE INDICATED.
 12. INSTALL RFID LOCATION TAPE PER MANUFACTURER'S INSTRUCTIONS.

I-256 1" IRRIGATION WATER (SHORT & LONG SIDE) RESIDENTIAL SINGLE SERVICE CONNECTION - UNIMPROVED PROPERTY
NOT TO SCALE

REVISION DATE	CITY OF CAPE CORAL UTILITIES DEPARTMENT P.O. BOX 150027 CAPE CORAL, FLORIDA 33915-0027	DETAIL NAME	DETAIL NO.
07-14-2022		1" IRRIGATION WATER (SHORT & LONG SIDE) RESIDENTIAL SINGLE SERVICE CONNECTION UNIMPROVED PROPERTY	I-256
ADOPTION DATE			
08-17-2022			



NOTES:

1. SINGLE SERVICES FOR BOTH SHORT AND LONG SIDE SERVICES SHALL BE 1" LAVENDER PE 4710 ONLY.
2. FOR INSTALLATIONS WHERE THE SERVICE CONNECTION CROSSES DIVIDED STREETS A MINIMUM 2" SCH 40 PVC CASING SLEEVE WILL BE REQUIRED AND MUST EXTEND CONTINUOUS THROUGH THE MEDIAN AND TERMINATE AT LEAST 1 FOOT PAST THE EDGE OF THE PAVED SURFACE. CASING SLEEVE UNDER THE STREET MAY BE BORED/BULLETED INTO POSITION. A MINIMUM OF 24" (2') COVER TO BE MAINTAINED BETWEEN CASING SLEEVE AND PAVED SURFACE.
3. ALL CORPORATION AND CURB STOPS SHALL BE COMPRESSION TYPE FITTINGS.
4. A MINIMUM 18" HORIZONTAL SEPARATION BETWEEN CORPORATION STOPS, SERVICE SADDLES, VALVES, AND/OR FITTINGS SHALL BE MAINTAINED REGARDLESS OF WHICH SIDE OF THE CARRIER PIPE THEY ARE LOCATED ON. ELECTRONIC MARKERS TO BE INSTALLED AT ALL CORPORATION STOPS.
5. MAINTAIN REQUIRED SEPARATION BETWEEN IRRIGATION AND POTABLE WATER SERVICE PIPING. SEE DETAILS UG-107 AND UG-109.
6. ALL CURB STOPS SHALL HAVE COLOR CODED TAGS FOR POSITIVE IDENTIFICATION.
7. SEE TYPICAL SECTION - PIPE BEDDING DETAIL. FULLY SUPPORT SERVICE CONNECTION CORPORATION STOP FITTINGS AND POLY TUBE WITH BEDDING MATERIAL WITHIN THE MAINLINE TRENCH WIDTH.
8. REFER TO TYPICAL SECTION SDR 9 POLYETHYLENE SERVICE BEDDING DETAIL FOR BEDDING REQUIREMENTS.
9. FOR PRODUCTS AND MATERIALS SEE THE PROJECT SPECIFICATIONS AND THE CITY OF CAPE CORAL QUALIFIED PRODUCTS LIST.
10. FOR SERVICE TAPS LOCATED UNDER PAVEMENT, THE CONTRACTOR SHALL INSTALL AN ELECTRONIC MARKER AT THE CORP STOP.
11. METER BOXES SHALL NOT BE PROVIDED FOR UNDEVELOPED PROPERTIES UNLESS OTHERWISE INDICATED.
12. INSTALL RFID LOCATION TAPE PER MANUFACTURER'S INSTRUCTIONS.

I-257

1" IRRIGATION WATER (SHORT & LONG SIDE) RESIDENTIAL DOUBLE SERVICE CONNECTION - UNIMPROVED PROPERTY

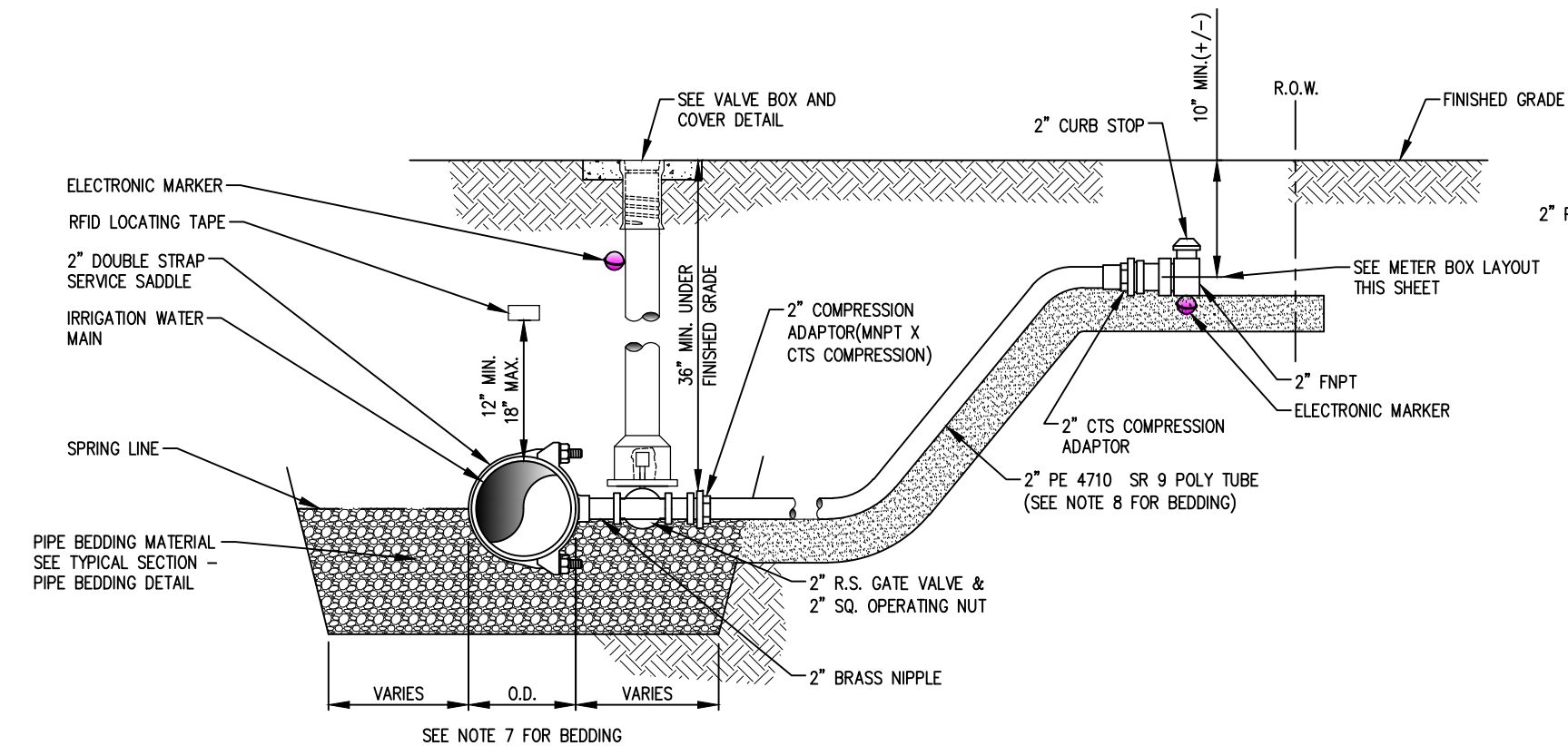
NOT TO SCALE

REVISION DATE
07-14-2022
ADOPTION DATE
08-17-2022



CITY OF CAPE CORAL
UTILITIES DEPARTMENT
P.O. BOX 150027
CAPE CORAL, FLORIDA 33915-0027

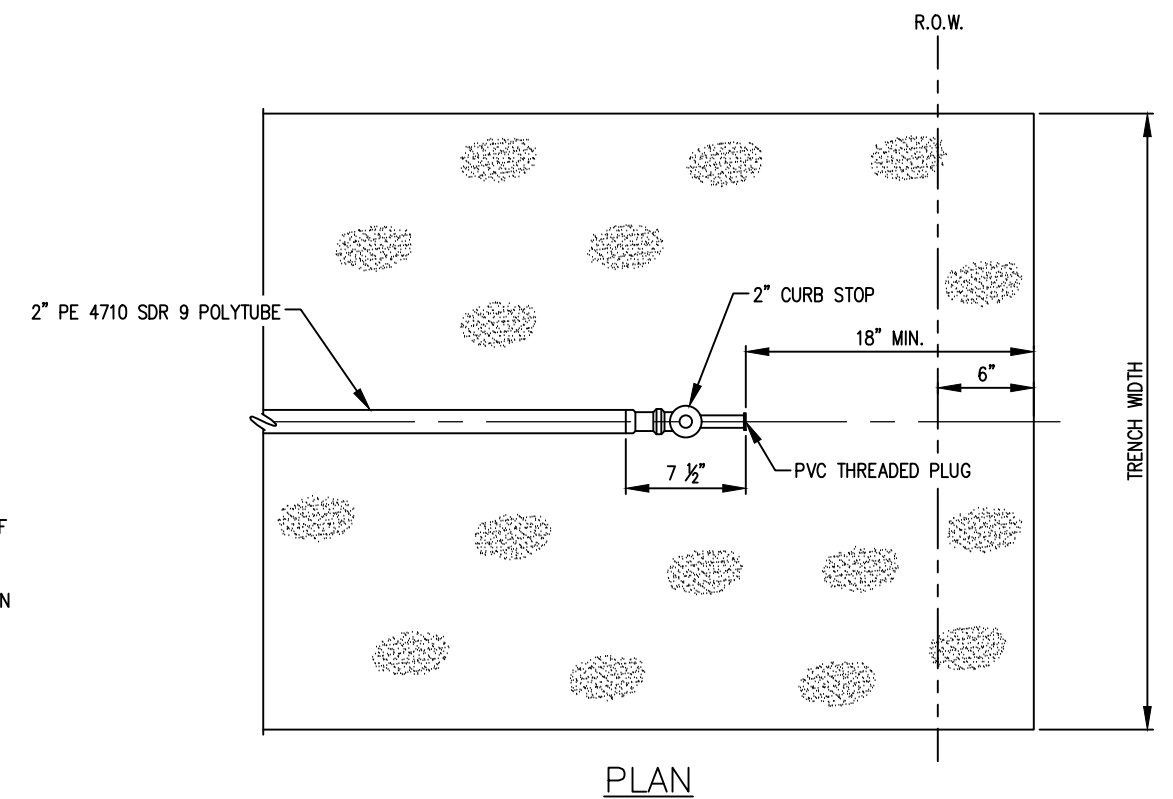
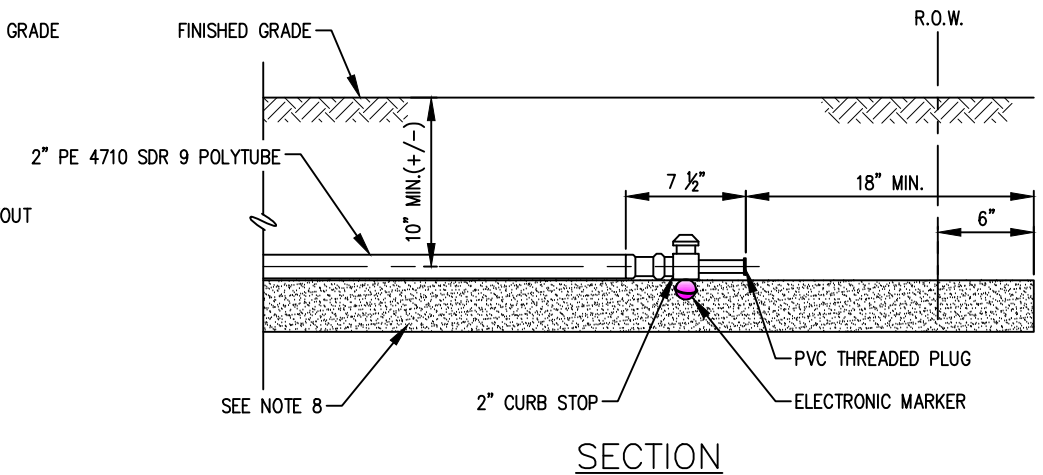
DETAIL NAME	DETAIL NO.
1" IRRIGATION WATER (SHORT & LONG SIDE) RESIDENTIAL DOUBLE SERVICE CONNECTION UNIMPROVED PROPERTY	I-257



NOTES:

1. SINGLE SERVICES FOR BOTH SHORT AND LONG SIDE SERVICES SHALL BE 2" LAVENDER PE 4710 ONLY.
2. FOR INSTALLATIONS WHERE THE SERVICE CONNECTION CROSSES DIVIDED STREETS A MINIMUM 3" SCH 40 PVC CASING SLEEVE WILL BE REQUIRED AND MUST EXTEND CONTINUOUS THROUGH THE MEDIAN AND TERMINATE AT LEAST 1 FOOT PAST THE EDGE OF THE PAVED SURFACE. CASING SLEEVE UNDER THE STREET MAY BE BORED/BULLETED INTO POSITION. A MINIMUM OF 24" (2') COVER TO BE MAINTAINED BETWEEN CASING SLEEVE AND PAVED SURFACE.
3. ALL CORPORATION AND CURB STOPS SHALL BE COMPRESSION TYPE FITTINGS.
4. A MINIMUM 18" HORIZONTAL SEPARATION BETWEEN CORPORATION STOPS, SERVICE SADDLES, VALVES, AND/OR FITTINGS SHALL BE MAINTAINED REGARDLESS OF WHICH SIDE OF THE CARRIER PIPE THEY ARE LOCATED ON. ELECTRONIC MARKERS TO BE INSTALLED AT ALL CORPORATION STOPS
5. MAINTAIN REQUIRED SEPARATION BETWEEN IRRIGATION AND POTABLE WATER SERVICE PIPING. SEE DETAILS UG-107 AND UG-109.
6. ALL CURB STOPS SHALL HAVE COLOR CODED TAGS FOR POSITIVE IDENTIFICATION.
7. SEE TYPICAL SECTION - PIPE BEDDING DETAIL. FULLY SUPPORT SERVICE CONNECTION CORPORATION STOP FITTINGS AND POLY TUBE WITH BEDDING MATERIAL WITHIN THE MAINLINE TRENCH WIDTH.
8. REFER TO TYPICAL SECTION SDR 9 POLYETHYLENE SERVICE BEDDING DETAIL FOR BEDDING REQUIREMENTS.
9. FOR PRODUCTS AND MATERIALS SEE THE PROJECT SPECIFICATIONS AND THE CITY OF CAPE CORAL QUALIFIED PRODUCTS LIST.
10. FOR SERVICE TAPS LOCATED UNDER PAVEMENT, THE CONTRACTOR SHALL INSTALL AN ELECTRONIC MARKER AT THE CORP STOP.
11. METER BOXES SHALL NOT BE PROVIDED FOR UNDEVELOPED PROPERTIES UNLESS OTHERWISE INDICATED.
12. INSTALL RFID LOCATION TAPE PER MANUFACTURER'S INSTRUCTIONS.

METER BOX LAYOUT



I-258

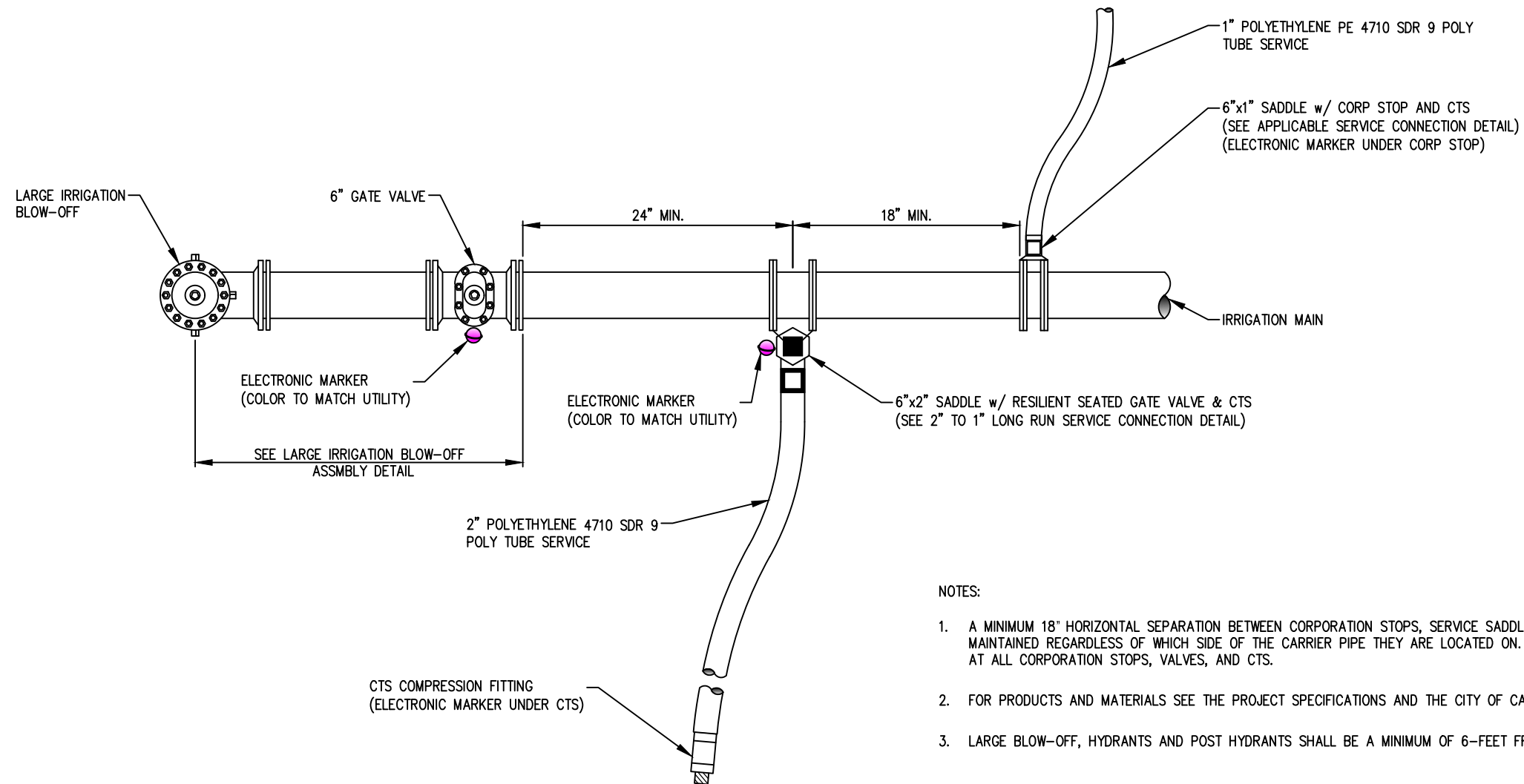
2" IRRIGATION WATER (SHORT & LONG SIDE) COMMERCIAL/MULTI-FAMILY SINGLE SERVICE CONNECTION - HDPE OPTION - UNIMPROVED PROPERTY
NOT TO SCALE

REVISION DATE
07-14-2022
ADOPTION DATE
08-17-2022



CITY OF CAPE CORAL
UTILITIES DEPARTMENT
P.O. BOX 150027
CAPE CORAL, FLORIDA 33915-0027

DETAIL NAME	DETAIL NO.
2" IRRIGATION WATER (SHORT & LONG SIDE) COMMERCIAL/MULTI-FAMILY SINGLE SERVICE CONNECTION HDPE OPTION - UNIMPROVED PROPERTY	I-258



NOTES:

1. A MINIMUM 18' HORIZONTAL SEPARATION BETWEEN CORPORATION STOPS, SERVICE SADDLES, VALVES, AND/OR FITTINGS SHALL BE MAINTAINED REGARDLESS OF WHICH SIDE OF THE CARRIER PIPE THEY ARE LOCATED ON. ELECTRONIC MARKERS TO BE INSTALLED AT ALL CORPORATION STOPS, VALVES, AND CTS.
2. FOR PRODUCTS AND MATERIALS SEE THE PROJECT SPECIFICATIONS AND THE CITY OF CAPE CORAL QUALIFIED PRODUCTS LIST.
3. LARGE BLOW-OFF, HYDRANTS AND POST HYDRANTS SHALL BE A MINIMUM OF 6- FEET FROM EDGE OF PAVEMENT.

I-259

TYPICAL CUL-DE-SAC/END OF LINE
NOT TO SCALE

REVISION DATE
07-14-2022
ADOPTION DATE
08-17-2022



CITY OF CAPE CORAL
UTILITIES DEPARTMENT
P.O. BOX 150027
CAPE CORAL, FLORIDA 33915-0027

DETAIL NAME

TYPICAL CUL-DE-SAC/END OF LINE

DETAIL NO.

I-259